



WJE RALEIGH

# Solutions for the Built World



Founded in 1956, Wiss, Janney, Elstner Associates, Inc. (WJE), is an interdisciplinary engineering, architecture, and materials science firm specializing in delivering practical, innovative, and technically sound solutions across all areas of new and existing construction. WJE combines state-of-the-art laboratory and testing facilities, nationwide offices, and knowledge sharing systems to provide solutions for the built world.

## OUR SERVICES

- Engineering
- Architecture
- Laboratory
- Forensics
- Facade assessment
- Roofing and waterproofing
- Failure and disaster response
- Historic preservation
- Repair and rehabilitation
- Peer review and enclosure commissioning
- Reserve studies

## OUR APPROACH

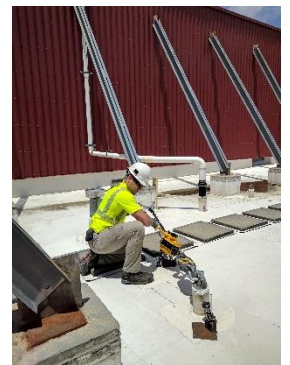
Structures in the growing centers of the Carolinas are just as diverse as the population's cultural and economic base. As materials, technologies, and structures change, our fundamental philosophy remains the same: developing better solutions based on an accurate diagnosis of each structure's unique problem. We strive to create partnerships and solutions that meet and exceed the needs and expectations of our clients.

## OUR PEOPLE

With a local team of technical staff in Raleigh, collaborative offices in Washington, D.C. and Atlanta, and over 800 employees worldwide, WJE has the resources to respond to virtually any problem in all aspects of construction technology. Our team applies the experience, technical capabilities, and knowledge gained from thousands of projects to every new challenge.

## OUR RESOURCES

Our Janney Technical Center laboratory and testing facility is one of the nation's largest privately owned construction-based testing laboratories, enabling WJE to provide reliable answers to questions about construction systems, components, and materials. No firm is more qualified to break new ground in finding practical, innovative, and technically sound solutions.





**RALEIGH REPRESENTATIVE PROJECTS**

- **East Carolina University, Life Science and Biotechnology Building**  
Building Enclosure Commissioning  
Greenville, NC
- **University of North Carolina, Mary Ellen Jones Building**  
Building Enclosure Commissioning  
Chapel Hill, NC
- **Port of Wilmington**  
Warehouse Hurricane Damage Assessment  
Wilmington, NC
- **First Citizen’s Bank Data Center**  
Roof Evaluation and Feasibility Study  
Raleigh, NC
- **301 Hillsborough Street**  
Design and Construction Phase Enclosure Consulting  
Raleigh, NC
- **Raleigh Iron Works**  
Building Enclosure Commissioning and Consulting Services  
Raleigh, NC
- **Qurorum Tower**  
Column Fire Damage Assessment and Repair Design  
Raleigh, NC
- **Home 2 Suites**  
Structural Assessment and Repair Design  
North Charleston, SC
- **Robeson County Administration Center**  
Slab-on-Grade Moisture Testing and Marble Hysteresis Study  
Lumberton, NC
- **Steve Troxler Agricultural Sciences Center**  
Exterior Enclosure Consulting Services  
Raleigh, NC
- **North Carolina State University, James B. Hunt Jr. Library**  
Building Enclosure Commissioning  
Raleigh, NC
- **Duke University, Brodhead Center**  
Exterior Enclosure Consulting Services  
Durham, NC
- **Fort Bragg Womack Army Medical Clinic**  
Exterior Enclosure Consulting Services  
Fort Bragg, NC
- **Charles R. Jonas Federal Building**  
Historic Preservation and Exterior Enclosure Consulting Services  
Charlotte, NC
- **Blum Warehouse**  
Structural Investigation  
Stanley, NC

**WJE RALEIGH**

8000 Regency Parkway  
Suite 410  
Cary, NC 27518  
984.345.0630

